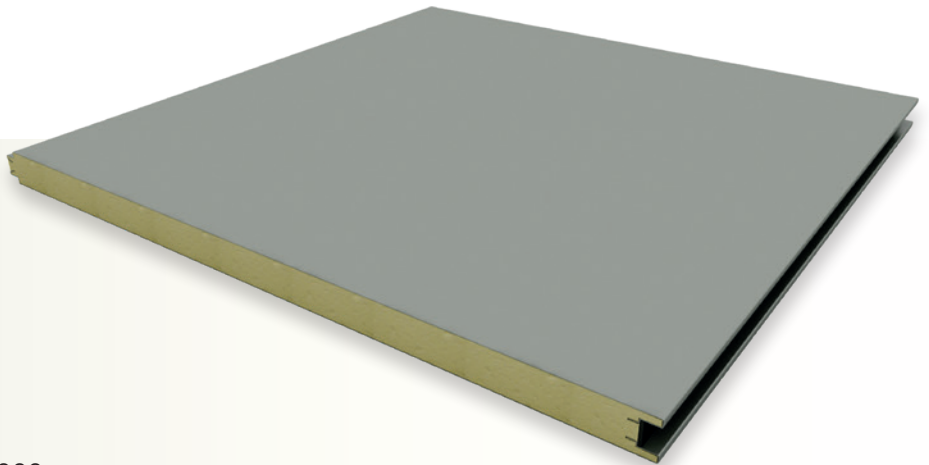


System PRT



THICKNESSES

From 25 mm to 120 mm.

DIMENSIONS

Width: standard module 1000 mm.
Other modules available on request

Max length: 13500 linear mm.

JOINT

Joint Male 18 mm – Female 20 mm

CERTIFICATIONS

Reaction to fire in accordance with standard 13501- 1:2009. CE certificate of conformity in accordance with STANDARD 14509:2013 – 0497/ CPR/3349.



DATASHEET

System PRT in expanded polyurethane.

Very high thermal insulation capacity due to their rigidity and the wide range of modules.

All the English, German and French certifications available, depending on customer requests.

New European SBI certification in accordance with DIN EN 13501-1: 2002 for polyurethane class 2 (B s3 d0) and for normal polyurethane (class assigned C s3 d0).

Production available also in PIR.

On request, insulated panels in polyisocyanurate (PIR) can be provided at 45 Kg / m³.

Ideal for construction of prefabricated buildings, partition walls, mobile homes and much more.

